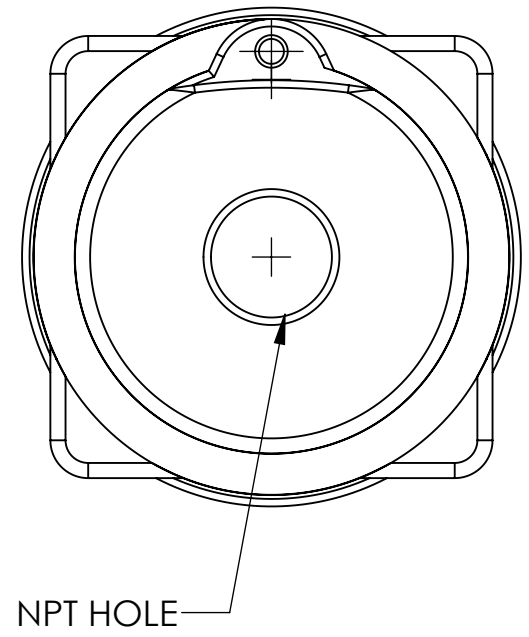
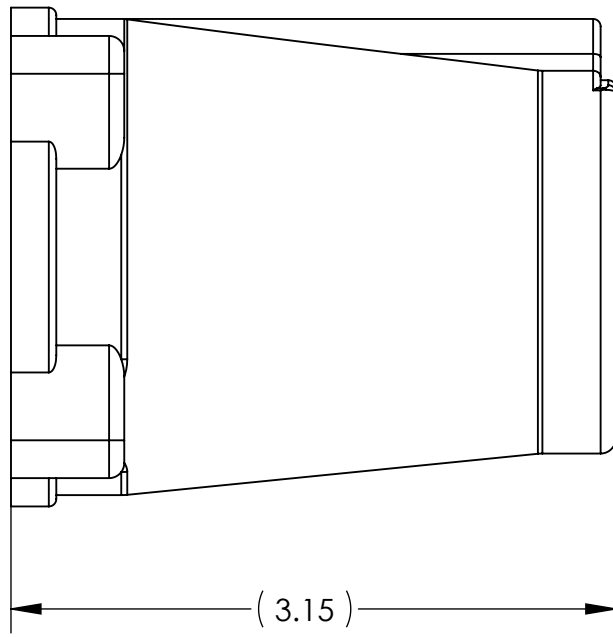
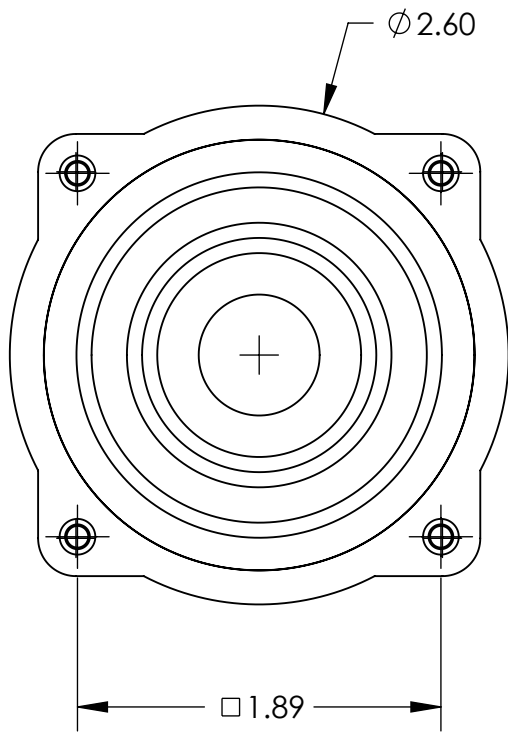



This drawing is the property of MELTRIC Corporation, Franklin (Milwaukee), Wisconsin, USA. Any unauthorized copying of this drawing by any means, or disclosure of its contents to any person not authorized by MELTRIC Corporation or its agents to receive it, is strictly prohibited.



PART NUMBER	NPT SIZE
552PON05	1/2" NPT
552PON07	3/4" NPT
552PON10	1" NPT
552PON12	1-1/4" NPT

<b>TOLERANCES</b> <input checked="" type="checkbox"/> ENGLISH 0.X ±0.05 0.XX ±0.01 0.XXX ±0.005 ±1/2" <input type="checkbox"/> METRIC X ±1 0.X ±0.5 0.XX ±0.1 ±1/2"		 A COMPANY OF MARÉCHAL ÉLECTRIC	
DRAWN: _____ DATE: _____	APPROVED: _____ DATE: _____	DRAWING TITLE: <b>SIZE 2 BLACK THREADED POLY HANDLE</b>	MATERIAL: <b>BLACK POLY</b>
PROJECT NUMBER: _____	PART NUMBER: <b>552PONxx</b>	SHEET: <b>1 OF 1</b>	